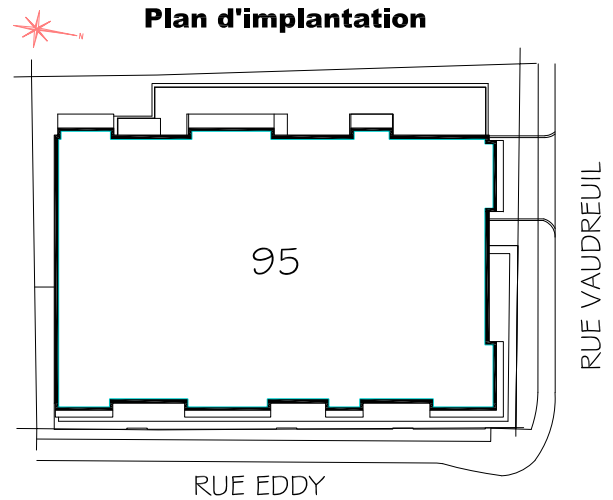




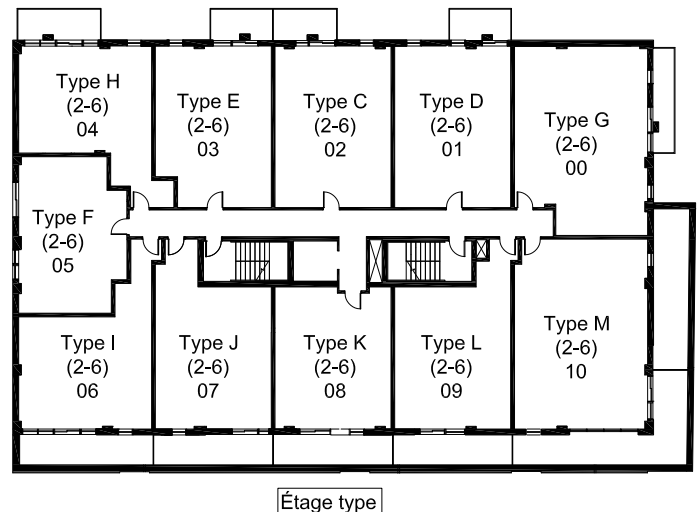
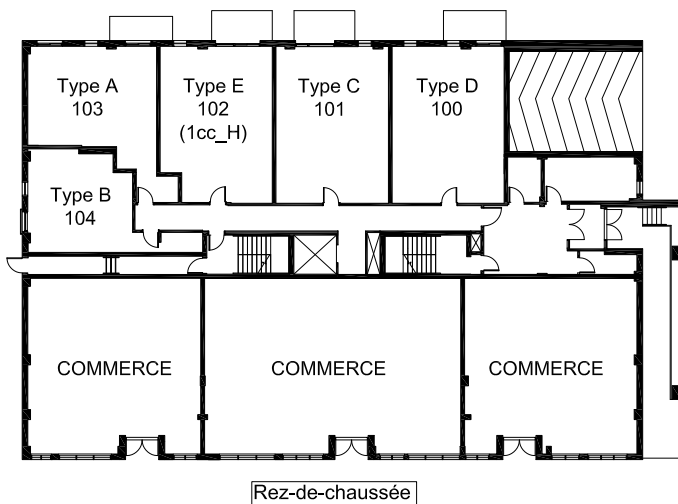
# HABITATIONS ESTORIL

1/2

<b>Propriétaire :</b>	Habitations de l'Outaouais métropolitain
<b>Architecte :</b>	Pluriel
<b>Adresses :</b>	95, rue Eddy Gatineau, QC J8X 2W3
<b>Année de construction :</b>	2024
<b>Structure :</b>	Béton
<b>Catégorie :</b>	Familles
<b>Toiture:</b>	Plate - Membrane
<b>Nombre d'étages :</b>	6
<b>Nombre de logements :</b>	60
<b>Typologie :</b>	49 x 1cc 10 x 2cc 1 x 1cc_H
<b>Salle communautaire :</b>	Non
<b>Ascenseurs :</b>	Oui
<b>Stationnement :</b>	Intérieur
<b>Rangement :</b>	Dans le logis
<b>Salles de lavage :</b>	Dans le logis

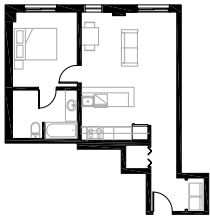


## Plans des étages

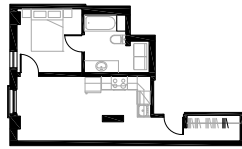




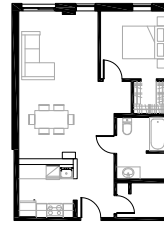
## Logements types



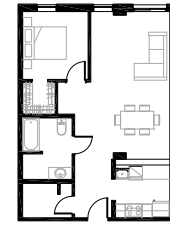
Logement type A - 1cc  
55 m<sup>2</sup>



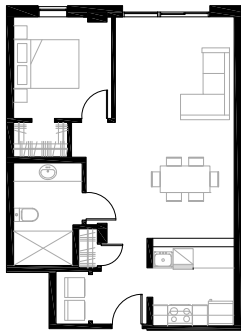
Logement type B - 1cc  
41 m<sup>2</sup>



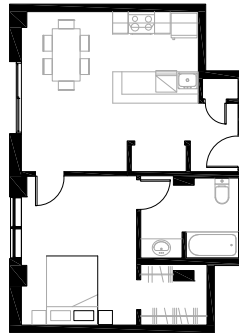
Logement type C - 1cc  
63 m<sup>2</sup>



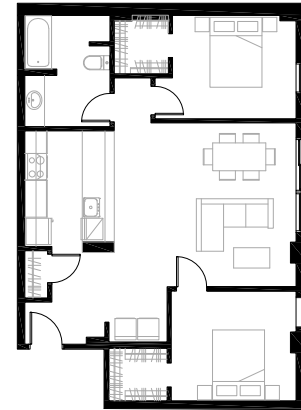
Logement type D - 1cc  
63 m<sup>2</sup>



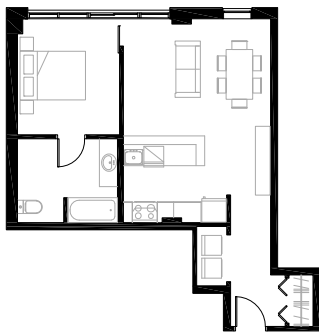
Logement type E - 1cc\_H (rdc) et 1cc (étage)  
61 m<sup>2</sup>



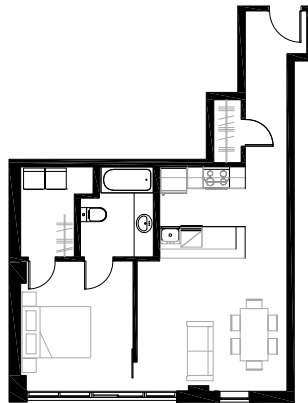
Logement type F - 1cc  
55 m<sup>2</sup>



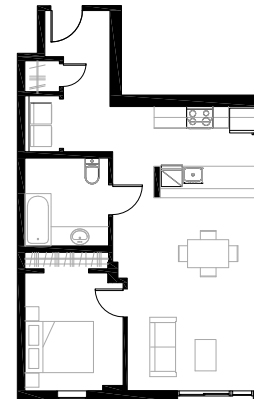
Logement type G - 2cc  
82 m<sup>2</sup>



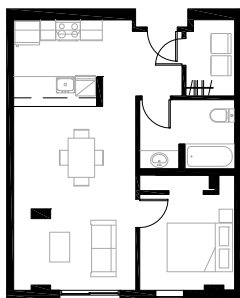
Logement type H - 1cc  
55 m<sup>2</sup>



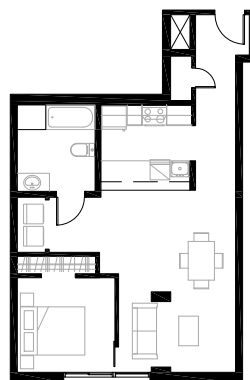
Logement type I - 1cc  
58 m<sup>2</sup>



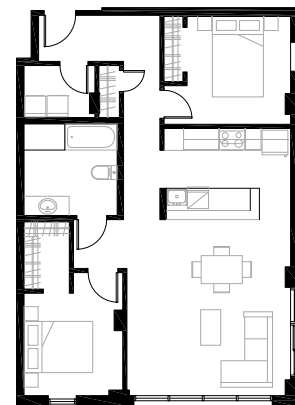
Logement type J - 1cc  
62 m<sup>2</sup>



Logement type K - 1cc  
55 m<sup>2</sup>



Logement type L - 1cc  
61 m<sup>2</sup>



Logement type M - 2cc  
86 m<sup>2</sup>